

Sensory Map

-

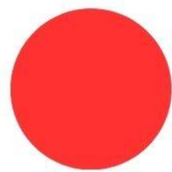
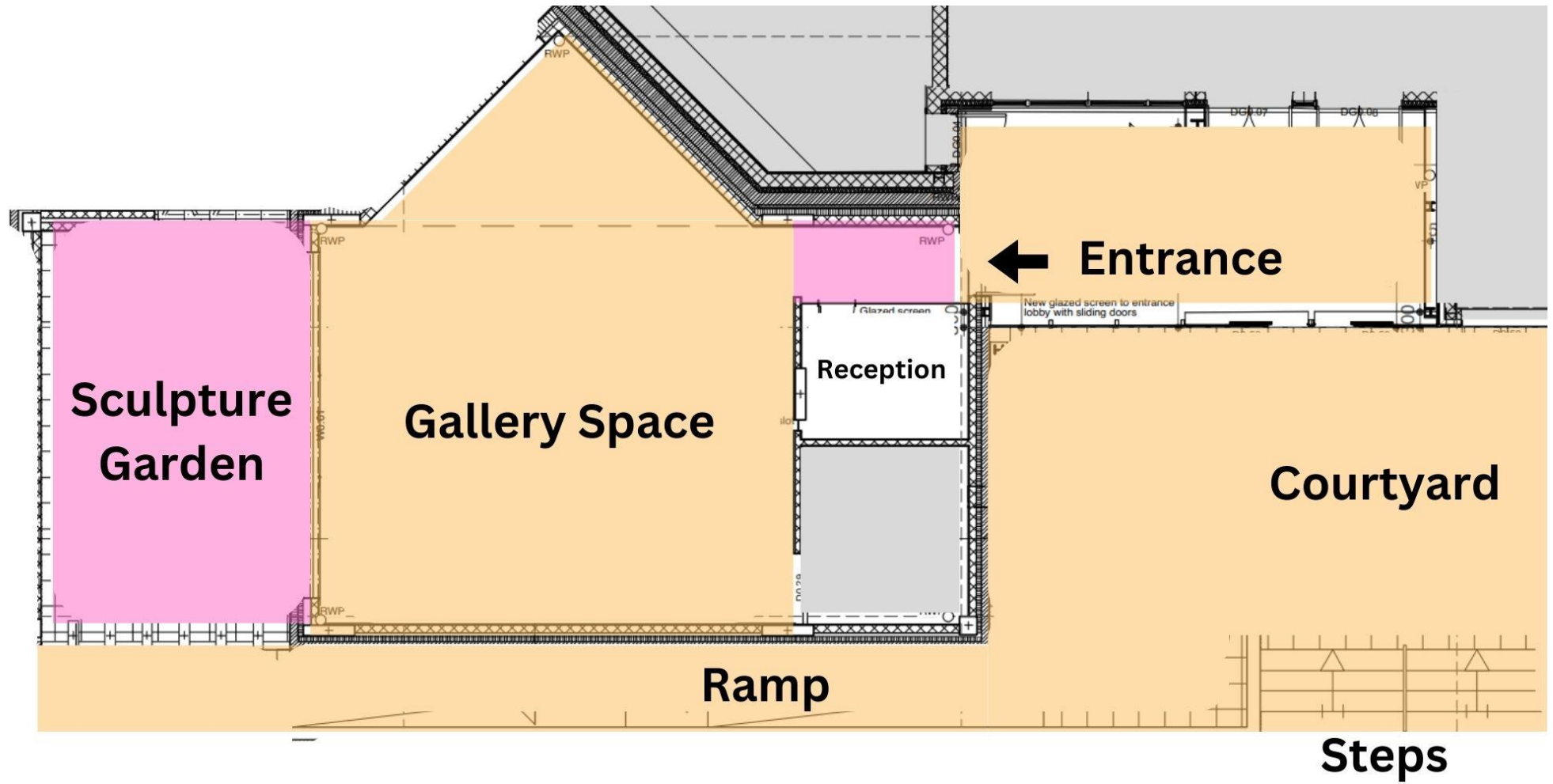
Súil Gallery



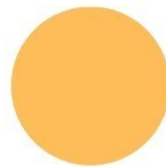
This Sensory Map is designed to help those on the autism spectrum prepare for a visit to the Gallery. It covers sound, light and touch.

Updated for Exhibition *The Art of Place*
16 Nov 24 – 31 Jan 25

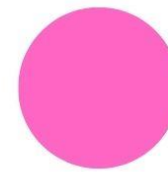
Sound



Very Loud

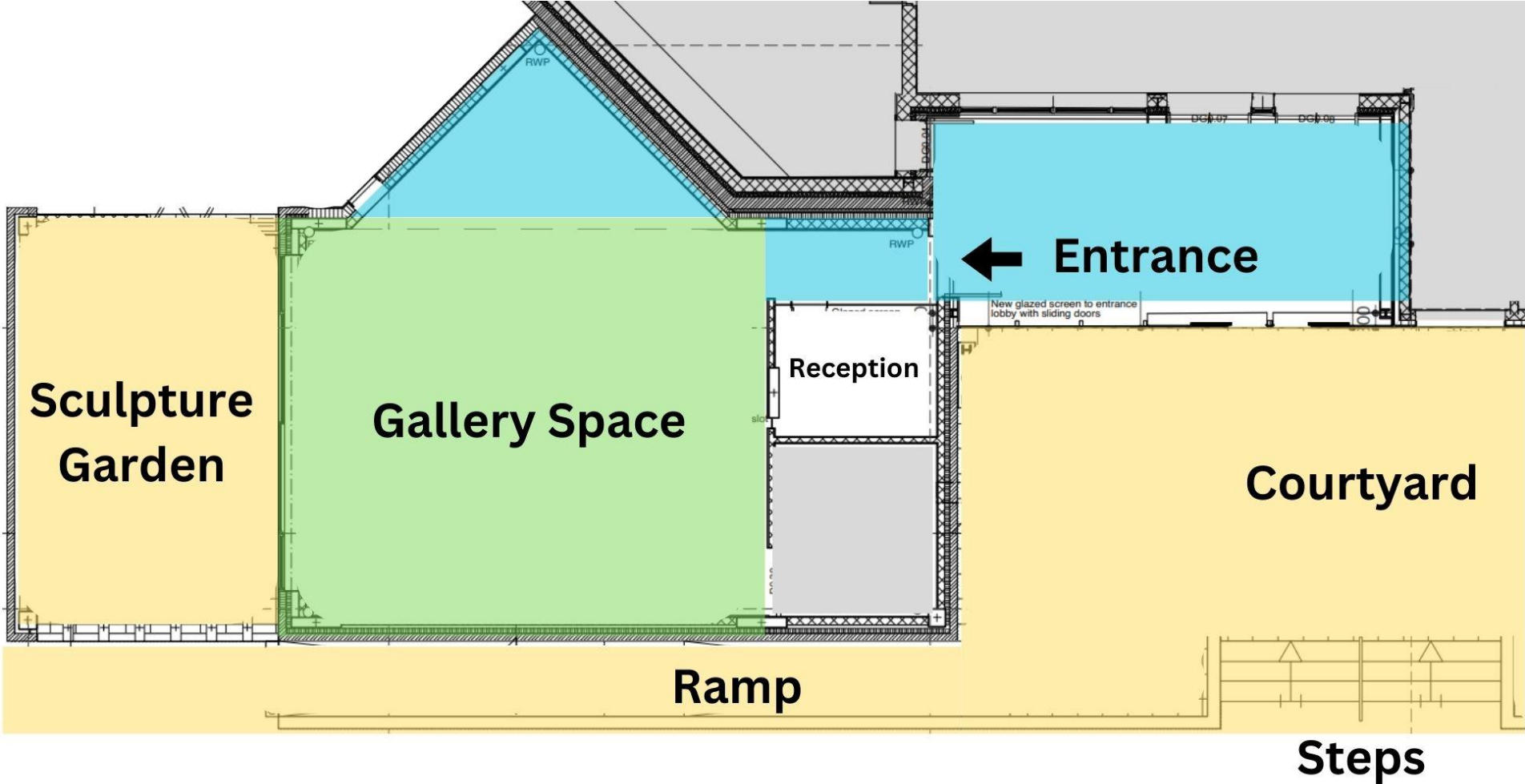


Can be Noisy



Quiet

Lighting



Dimly Lit



Well Lit

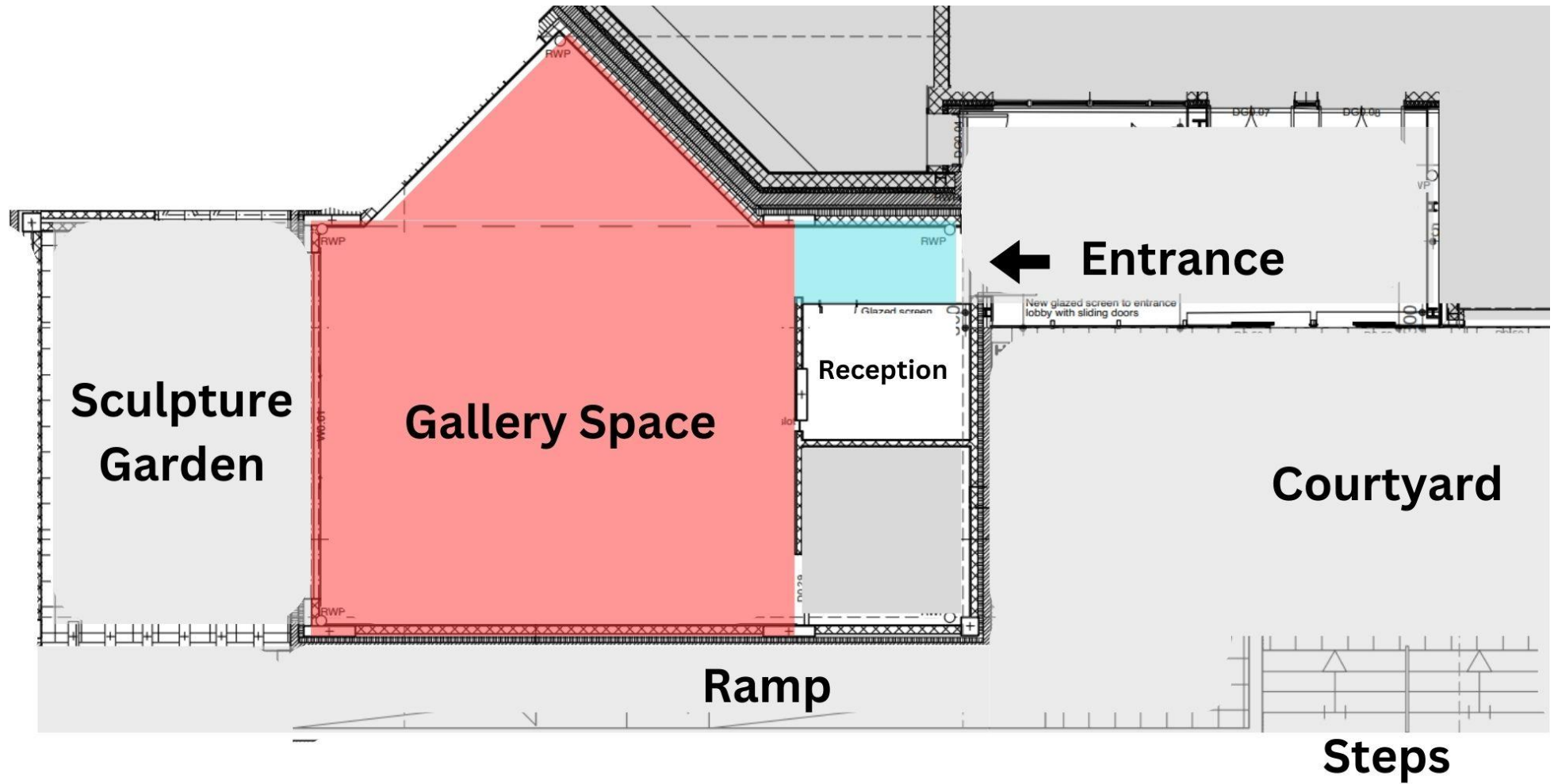


Very Well Lit

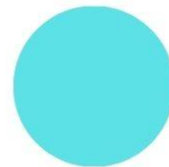


Outside

Touch



Please dont touch



You can touch