

Social Story

-

Your Visit to the Súil Gallery



When we can visit

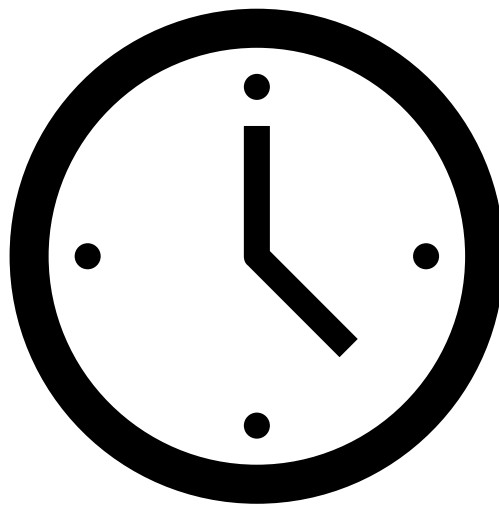
The gallery is open every Tuesday, Wednesday, Thursday, Friday and Saturday.

The gallery opens at 10:00am, then we can go inside.

The gallery closes at 4:00pm.

The gallery is free to visit.

The gallery is connected to the library, the Glór theatre and the Glór café.



This is what the gallery looks like outside.



To go inside, we use these big doors. We can use the steps or the ramp.



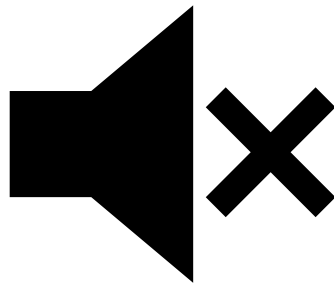
There is a sign on the door that says Súil Gallery.



Quiet hours

If we would like to visit the gallery when it is quieter, we can go during 10am and 11am.

There will be no noisy artworks and the lights will not be as bright.

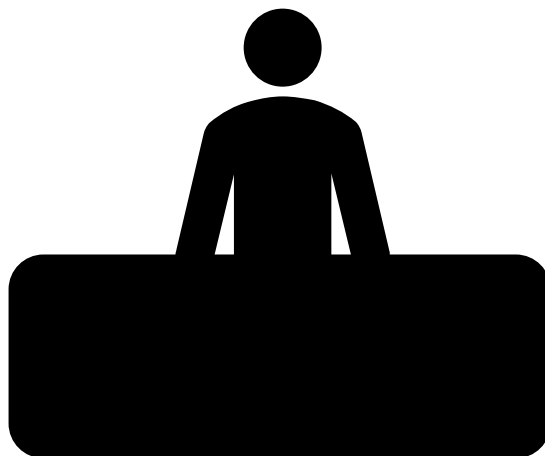


Reception



This is the gallery reception desk. We can come to the desk to ask questions. There may be a queue at the desk. We may need to wait.

If we don't want to, we don't have to visit reception, we can just walk into the gallery.



Accommodation Station

There is an accommodation station at the reception. We can take whatever we would like to help us with our visit.

There are:

- Fidget toys



- Ear defenders



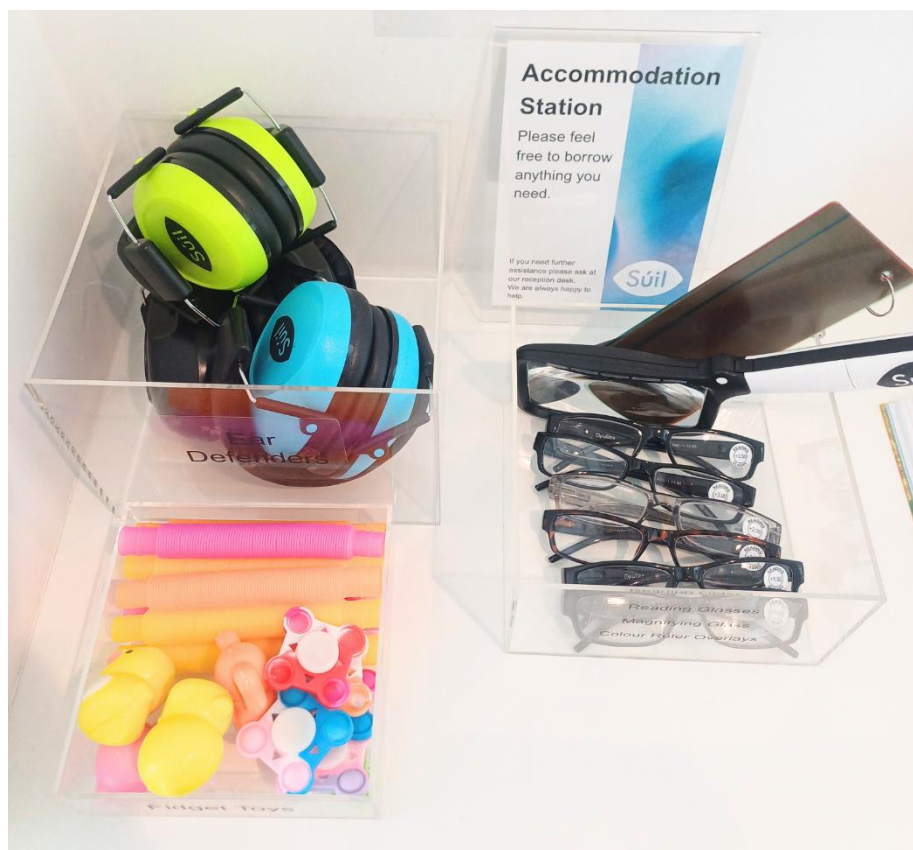
- Colour overlays



- A magnifying glass



- Reading glasses



People we might meet

We might see Aoife or Muiríosa at the reception desk or in the gallery. Or there might be someone else. Everyone is friendly and wants to help us with our visit.



Aoife has long brown hair.



Muiríosa has short brown hair and wears glasses.

Inside the gallery

The gallery is a square shape and has a high ceiling. Sometimes there are bright lights in the gallery.



The Gallery has a glass wall on one side so you can see outside.

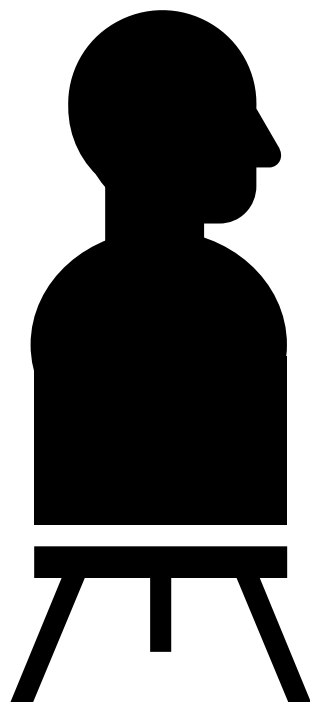


What is in the gallery

The gallery might have pictures on the wall, sculptures on the floor or other works of art for us to look at.

The artworks we see might be different every time we visit.

We can check the Súil website to see what will be there.



Gallery rules

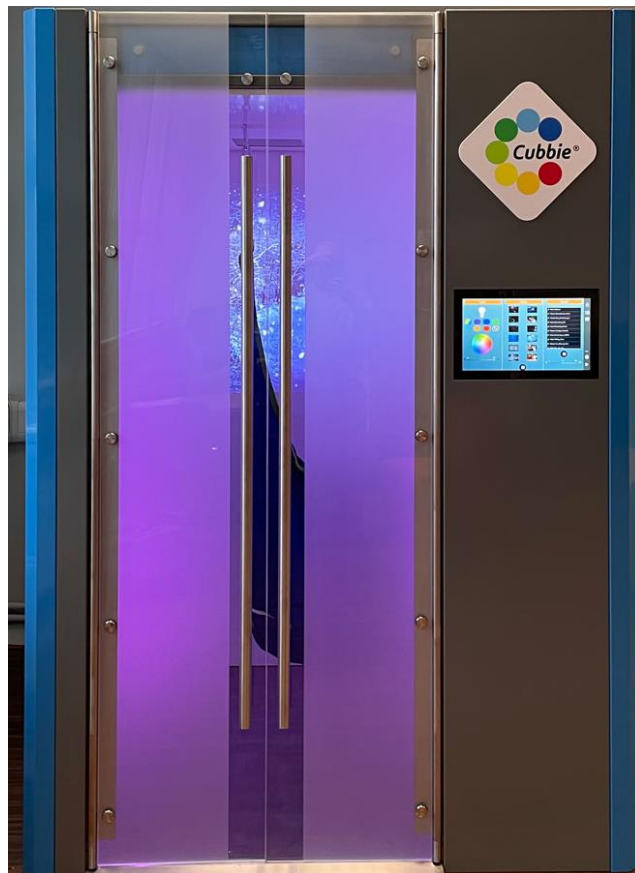
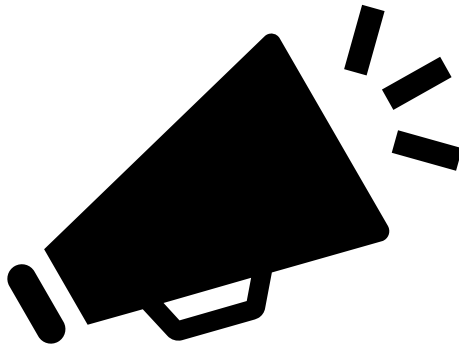
We cannot touch the artworks, because even clean hands leave marks.

We cannot eat or drink in the gallery.



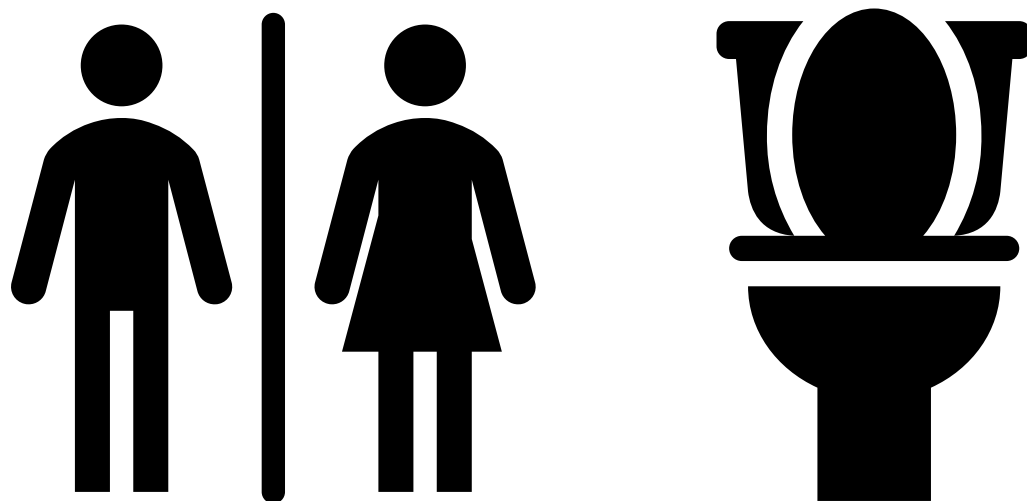
Gallery Noise

If the gallery gets too noisy we can leave. We can go to the library. There is a Cubbie sensory hub in the library that we can use.



Using the Toilet

There are toilets in the library and in Glór. There is a big accessible toilet in the library. There are hand dryers in the toilets which make noise.



This is the door to the accessible toilet.



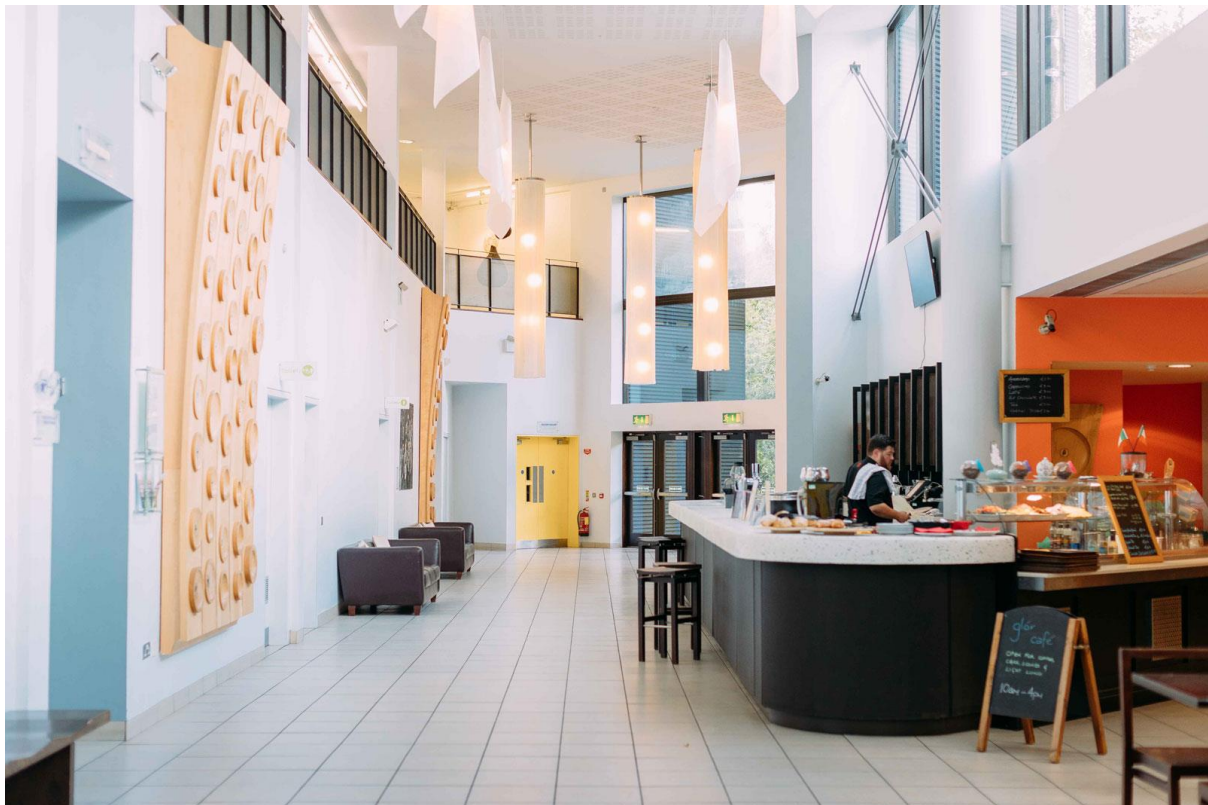
This is what is inside the accessible toilet.





Other things you can do on your visit

If we would like to eat or drink something we can visit the café. The café is open from 10.00am – 2.30pm. We can pay with card or cash.



If we all need to leave the building quickly

If we hear a very loud alarm, that means we all need to leave the building. We need to go quickly and calmly.



To leave the building we can follow a staff member or the exit signs.

